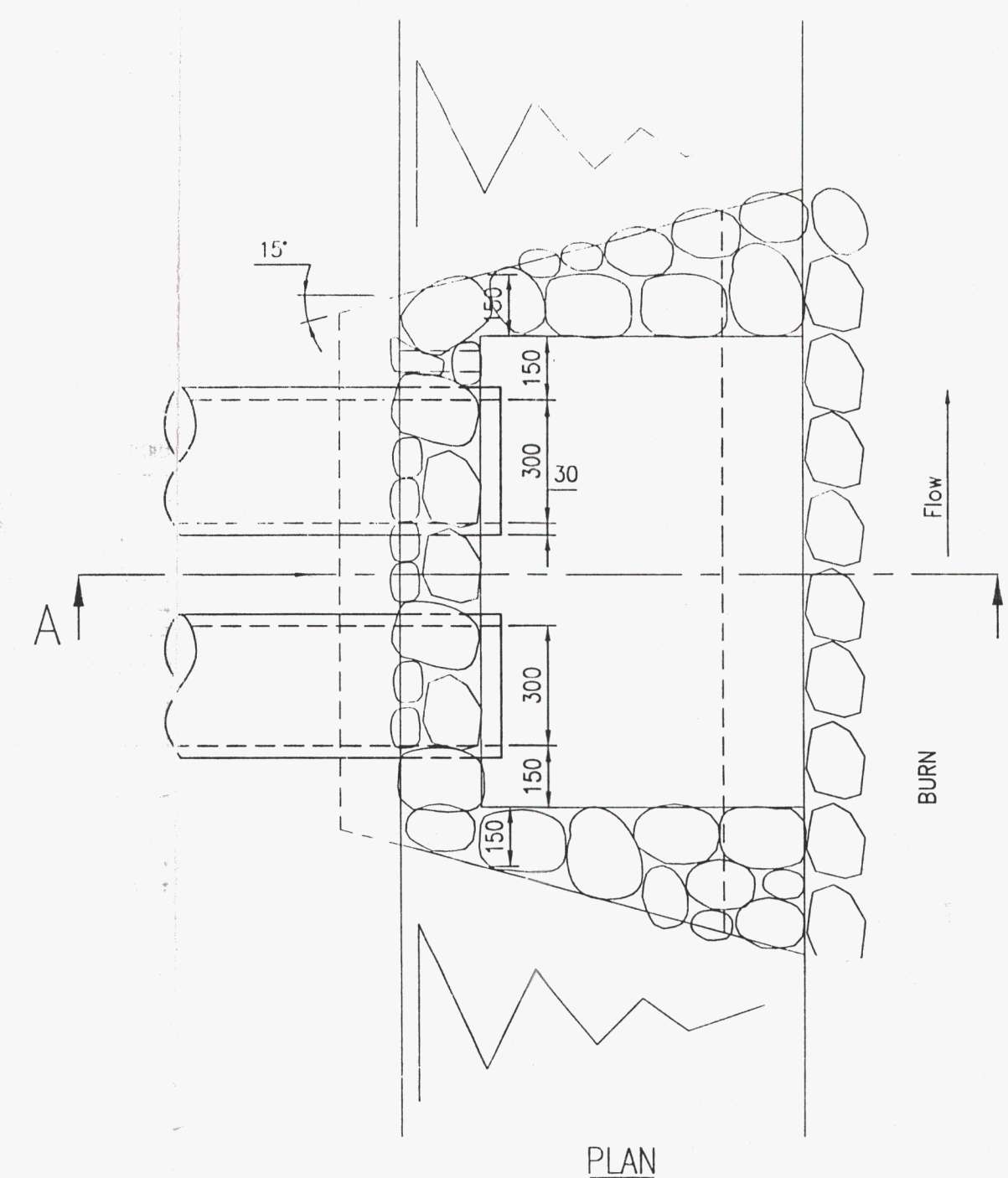
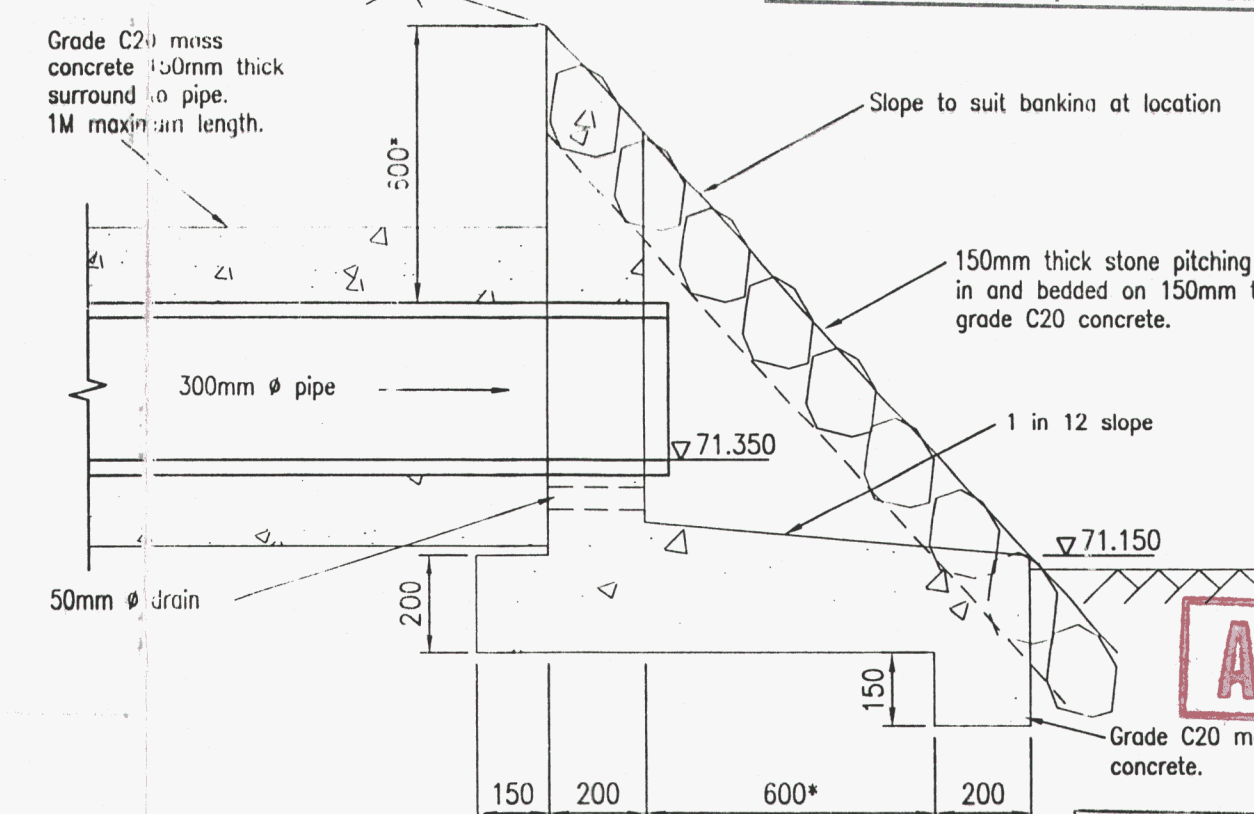
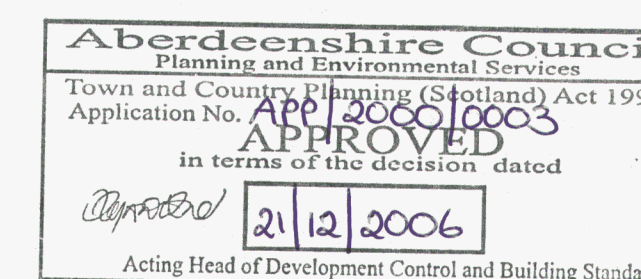


HEADWALL DETAIL
SCALE 1:1500



Dimensions modified for single
pipes, as required.

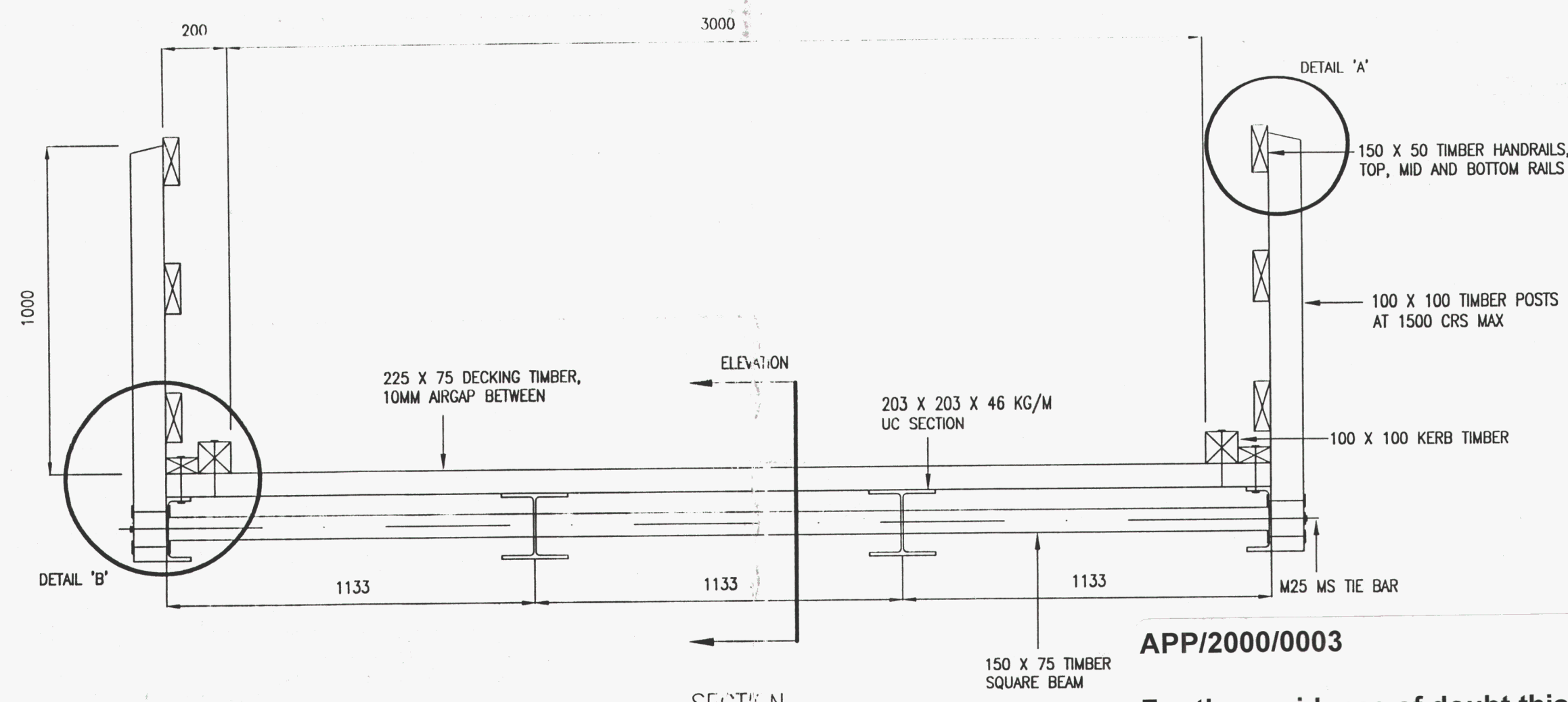


AMENDMENT

ABERDEENSHIRE COUNCIL
RECEIVED
24 JAN 2005
APP No.
PLANNING AND ENVIRONMENTAL SERVICES

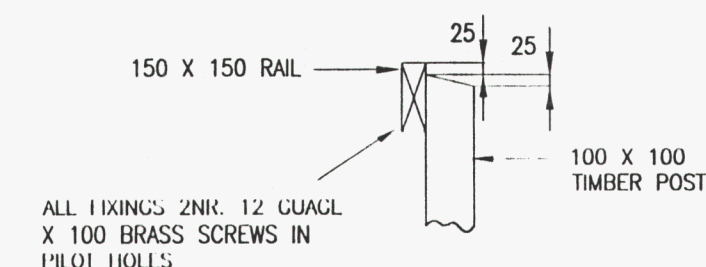
SECTION A-A
SINGLE AND TWIN PIPES

Dimensions to suit bank at specific locations.

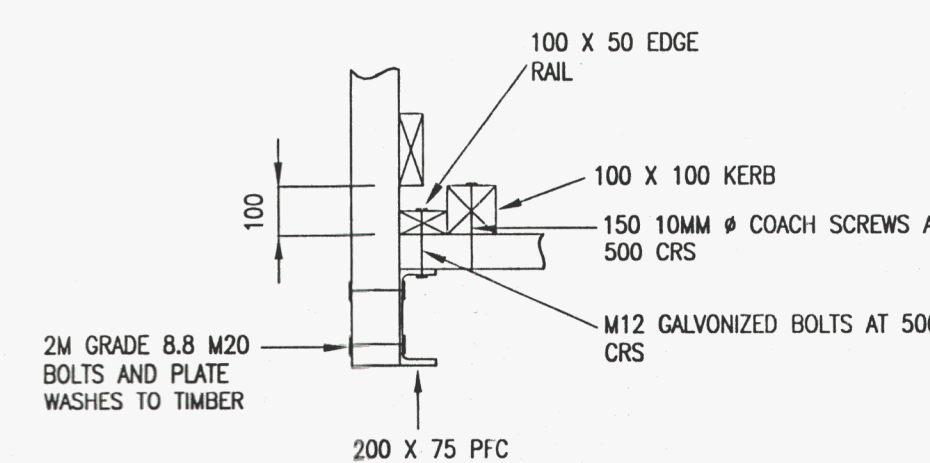


APP/2000/0003

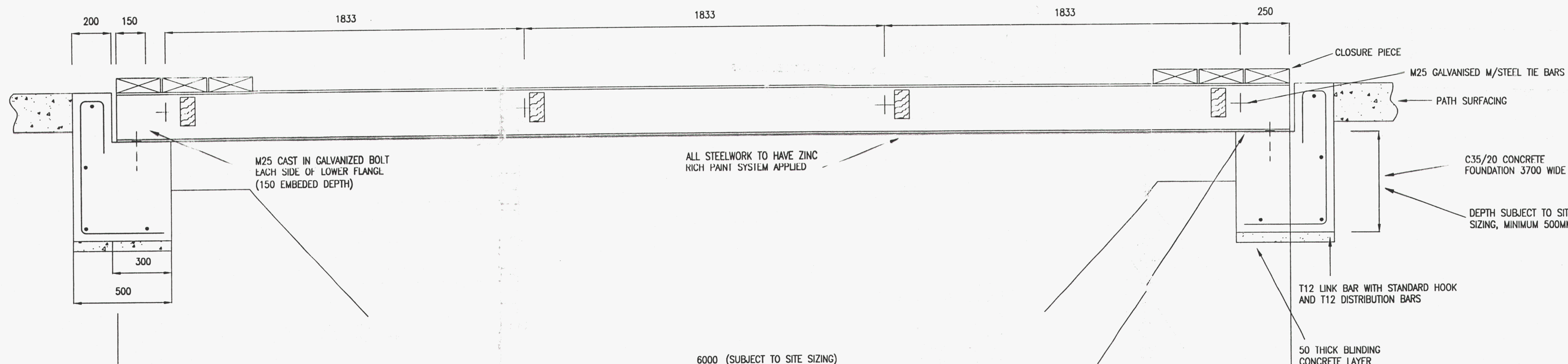
For the avoidance of doubt this planning permission does not include the reinstatement of the railway between Kirklands Depot and the Inverey Fishings Hut, including erection of one station building, associated engineering works and formation of a multi purpose path, as highlighted in red on Plan 2408 Drawing 02 Rev RO1 Layout 'West End'. This part of the site was subject to refusal notice S000837PF, dated 30 June 2003 and subsequent Planning Appeal P/PPA/110/445 which was dismissed on 5 May 2004 (as attached).



DETAIL A



DETAIL B



SECTION ON LONGITUDINAL CL

NOTES

- 1) 10MPH SPEED LIMIT SIGN TO BE CREATED BOTH ENDS OF THE BRIDGE.
- 2) GENERAL DETAILS TO SUIT SITE TOPOGRAPHY.
- 3) ALL TIMBER TO BE PRESSURE TREATED LARCH OR DOUGLAS FIR.

THE ROYAL
DEESIDE RAILWAY
PRESERVATION
SOCIETY

RAILWAY DEVELOPMENT AT
MILTON OF CRATHES

DETAILS OF PEDESTRAIN &
LIGHT VEHICLE BRIDGE &
CULVERT HEADWALLS

FAIRHURST		88 Queens Road Aberdeen AB15 4YQ T: 01224 321222 F: 01224 321201
CONSULTING STRUCTURAL AND CIVIL ENGINEERS		
Scale of A1: 1:1000	Status: INFORMATION	GD File Name: pc00001-.dwg
Drawn: MC	Checked: BMcG	Approved:
Date: 20/12/04	Date: 20/12/04	Date:
Drawing No: 59912/00001	Revision:	

APPLICANT